

PTFE LINED SPACERS TYPE H DESIGN DIN 2448/2874 - CERTIFIED - 2014/68/EU (PED)

Standard Supply

Design:

DIN 2848/2874

Range:

DN 15 - DN 600, PN 10

Metallic parts:

body: P245GH EN 10216-1

flange: P245GH EN 1092-1

Interior lining:

← PTFE

Variants

Metallic parts:

Stainless Steel 304L/316L

Low temp. steel P275NL

Interior lining:

← Antistatic PTFE



Spacers Type H in Antistatic version



Standard finishing:
gray epoxy-vinyl zinc paint

Available on request



Approvals and Certifications



Quality and Special tests



Engineering Services



Special Supply



Stainless steel 304L/316L components



External Finiture



DIN

index

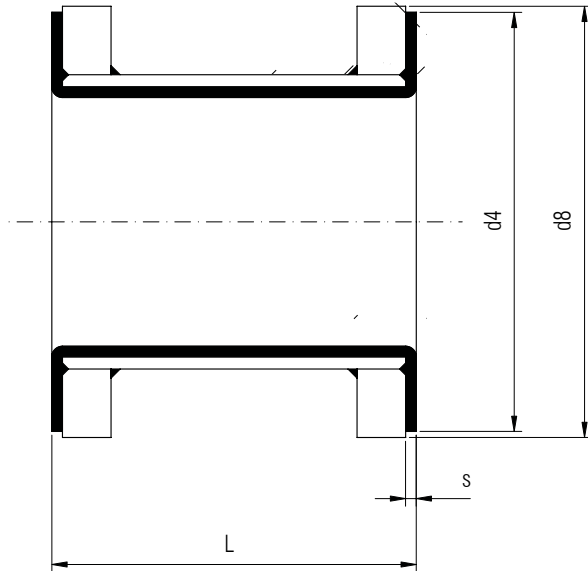
previous view

D2-60
data sheet

DIFLINE

D2

PTFE LINED SPACERS TYPE H DESIGN DIN 2448/2874 - CERTIFIED - 2014/68/EU (PED)



Dimension table

DN	L min. max.	L max. mm	s	d4 mm	d8 mm	Weight pipe kg/m	Weight 2
15	60	100	3	45	50	1,2	0,3
20	60	100	3	58	60	1,6	0,4
25	60	100	3	68	70	2,5	0,5
32	60	100	3,5	78	82	3,4	0,7
40	60	100	3,5	88	92	4,5	0,9
50	60	100	4	102	107	5,8	1,3
65	70	120	4,5	122	127	7,1	1,6
80	70	120	5	138	142	10	2,3
100	80	120	5,5	158	162	14	2,7
125	80	120	5,5	188	192	14,5	4
150	80	150	6	212	218	23,5	4,5
200	80	150	6,5	268	273	39	6
250	80	150	7	320	328	55,5	8,5
300	90	200	7	370	378	74	10
350	90	200	7	430	438	85	13
400	90	200	7	482	488	102	16,5
450	100	200	7	532	540	130	20
500	100	250	7	585	594	155	23

Technical specifications of Difline products



Pipes and Flanges dimensions according to DIN



Fittings dimensions according to DIN 2848



Operative Conditions



Bolt Torque



Finiture, Marking, Packing



Table of Chemical Resistance of Materials*