



**□ AISI 316L REUSABLE BS 4825 SANITARY CLAMP DIFLON E3**

The fitting is used in pharmaceutical and food industries to connect hoses quickly to equipments and plants.

Standard construction material is AISI 316L.

The fitting is laser marked with material, lot/casting, DN and brand.

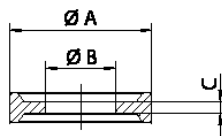
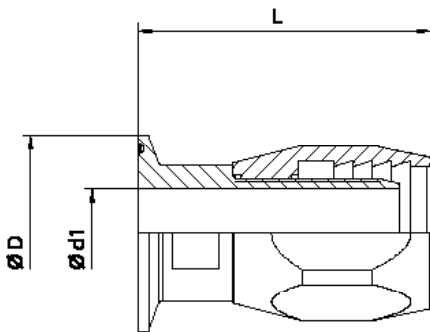
Mechanical mirror polishing with standard surface finish Ra 0,6.

Other finishes are available on request.



**RECOMMENDED GASKET**

Clamp BS 4825 gasket in DIFLEX, resistant to all acids and chemicals, pharmaceuticals and food products with temperatures from -170 °C to +270 °C and pressures up to 50 bar.



**GASKET CLAMP BS 4825**

DN	L	Ø D	Ø d1
15 - 1/2"	58	25,4	9
20 - 3/4"	64	25,4	15
25 - 1"	69	50,4	20
40 - 1 1/2"	94	50,4	33

DN	Ø A	Ø B	C	Ø R	Ø S
15 - 1/2"	22	9,6	1,7	-	-
20 - 3/4"	22	16	1,7	-	-
25 - 1"	-	-	1,7	50,5	22,1
40 - 1 1/2"	-	-	1,7	64	47,4