

PTFE ENVELOPE GASKETS WITH FREE ASBESTOS INSERT - TYPE Y FOR EN 1092-01 OR ANSI FLANGE

Application examples

flat gaskets for flanges

. profiled flat gaskets, for quick assembly etc.

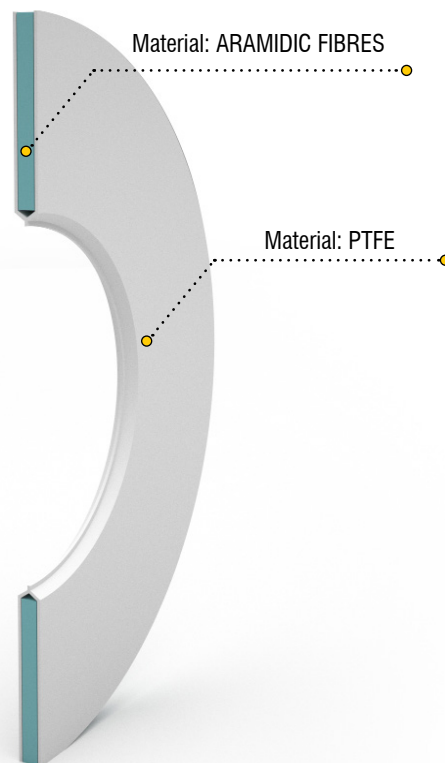
Applications

Acids, Strong alkali, Solvents, Catalyzers, Aromatics, etc. Food, Pharmaceuticals, Chemicals, Petrochemicals, etc.

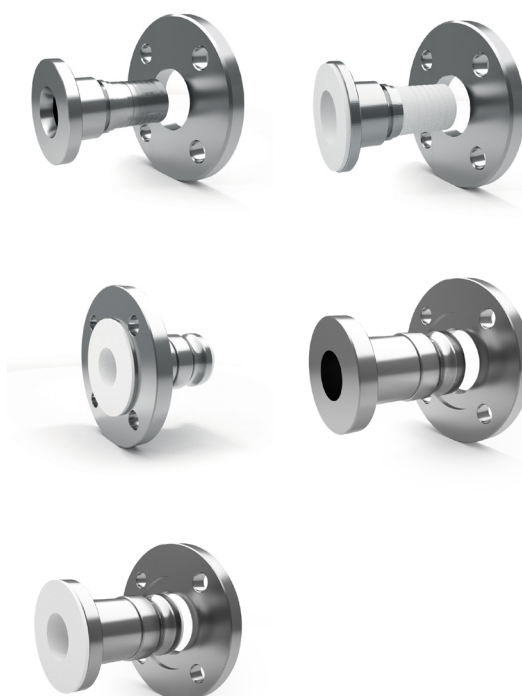
. Operating temperature: + 180° C

. Working pressure at room temperature: 16 bar

. Operation lifetime: limited



Service gaskets for fitting type:



Gaskets dimensions

DN	Ø A DIN	Ø A ANSI	Ø B	C
15 - 1/2"	45	35	15	3
20 - 3/4"	58	43	20	3
25 - 1"	68	51	25	3
32 - 1 1/4"	78	64	32	3
40 - 1 1/2"	88	73	40	3
50 - 2"	102	92	50	3
65 - 2 1/2"	122	105	65	3
80 - 3"	138	127	80	3
100 - 4"	158	158	100	3